

Installing MSSQL 2005 Express Edition

Before Installation

Check to see if there are any other versions of MS SQL installed on your server. Do this by going to Start-Control Panel-Settings-Add/Remove Programs; remove any instance of MSSQL that appears in the list.

MSSQL says my OS does not support it. What should I do?

Download the ~200MB MSSQL 2005 Express edition from Microsoft. This will come with a service pack that should enable MSSQL to install correctly.

Installing MSSQL 2005

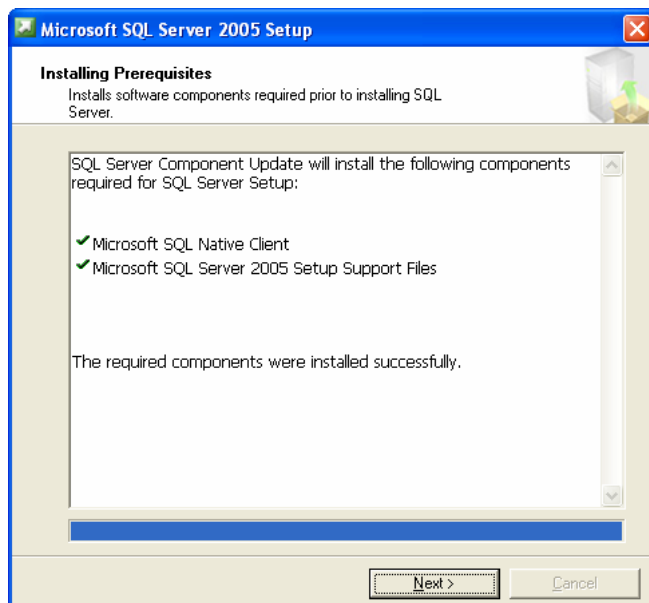
Double-click the executable file to begin installation. The installer program will unpack all of the necessary files to install MSSQL. This may take a few minutes.

1. End User License Agreement.

Take a moment to review the terms and conditions. When you are satisfied that you wish to continue, check the 'I accept' checkbox in the bottom-left of the window. Click 'Next' to continue.

2. Installing Pre-Requisites

If required, the installer will now install and components required for MSSQL. Click 'Install' to begin installing these components or 'Cancel' to stop the install process. When completed you should see a window that looks like this:



Click the 'Next' button to advance to the next stage.

3. System Configuration Check

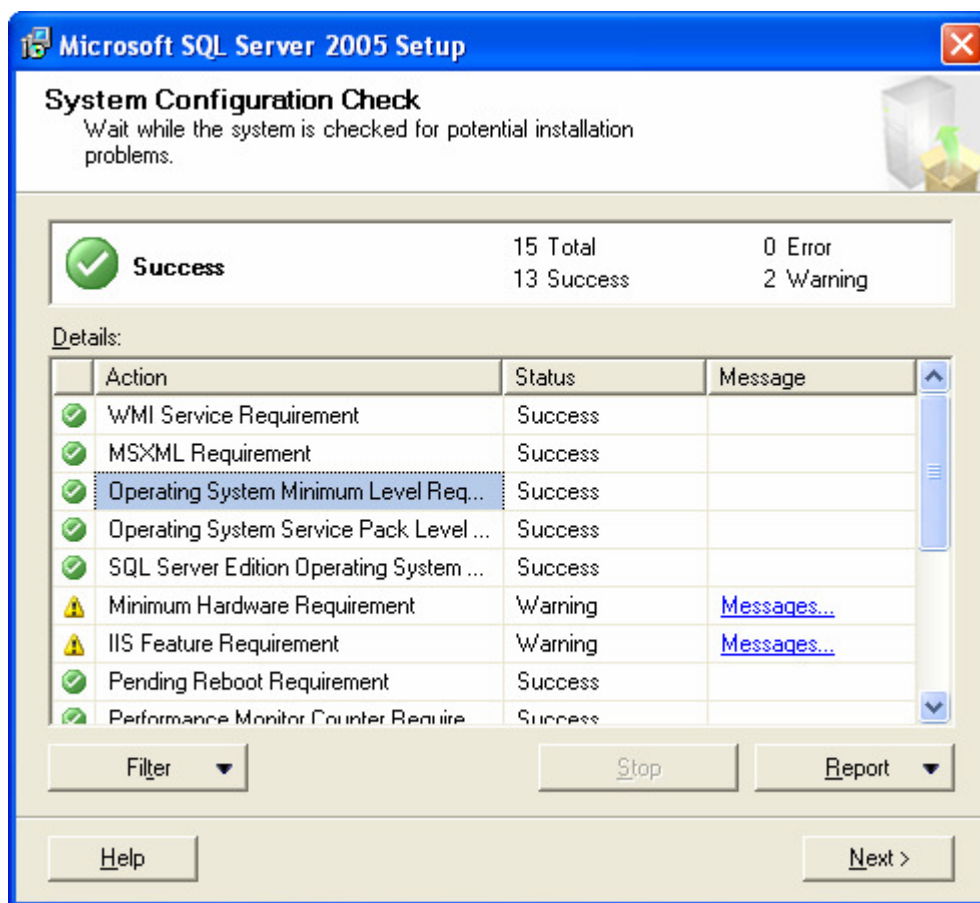
MSSQL will now check your system configuration. No action is required here.

4. Microsoft SQL Server 2005 Setup

This window will signify that the pre-requisites have been correctly installed and MSSQL is ready to install on your computer. Click the 'Next' button to continue.

5. MSSQL System Configuration Check

The installer will now check your system setup, including your OS, hardware specification:

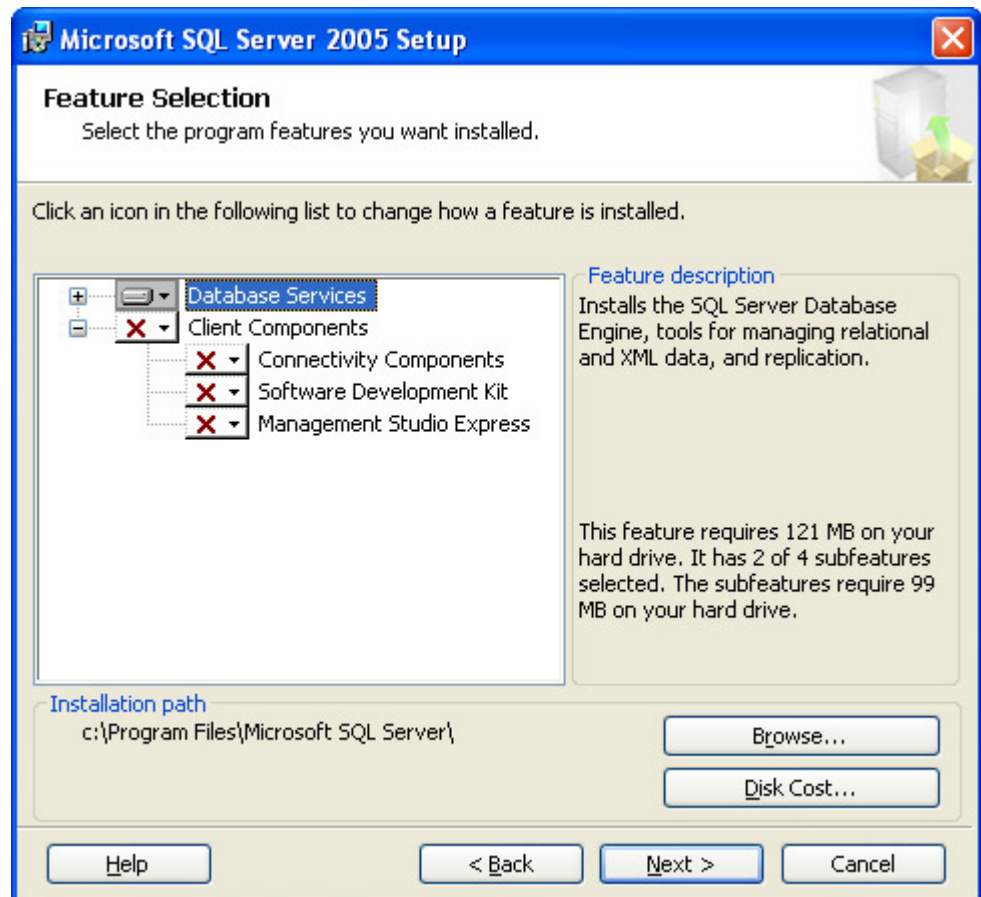


This will determine if your system is ready for the MSSQL installation. If you have any problems at this stage you may be unable to install MSSQL at this time. Contact your System Administrator if you require any assistance.

If this stage completes successfully, click the 'Next' button to advance to the next stage.

6. Microsoft SQL Server 2005 Setup

- a. Registration Information
Enter your name and Company name in the spaces provided. Click 'Next' to continue.
- b. Feature Selection
This section allows you to choose which features you would like included with your installation of MSSQL.



Any options with a red 'X' indicates that this feature will not be installed. Simply click on the red 'X' and you will be able to choose to install that component or the entire feature, for example in this case, if the Client Components entire feature was selected, the Connectivity Components, Software Development Kit and Management Studio Express components would be installed as they are part of the Client Components feature. If you are unsure as to how much hard-disk space is available on your computer, simply click on the 'Disk Cost...' button for information on available drive space. If you wish to change the location of the MSSQL installation from the directory shown under 'Installation Path', click the 'Browser' button and select a new location. When you are satisfied that you have selected all the features you require, and the correct location, click the 'Next' button to continue.

- c. **Authentication Mode**
This allows you to decide whether you wish to allow use of the database through Windows authentication, i.e. anyone with access to that computer, or Windows/Server Authentication, which requires a password in order to gain database access. Windows authentication is set by default – if you wish to use mixed authentication, select the ‘Mixed Mode’ radio button and enter and confirm a Server Authentication password. When you are satisfied with these options, click ‘Next’ to continue.
- d. **Configuration Option**
This allows you to further customize your MSSQL installation by choosing to enable User Instances and add active MSSQL Server users to the administrator role. Click ‘Next’ when you are ready to continue.
- e. **Error and Usage Support Settings**
This allows you to choose whether you wish MSSQL to automatically send error reports to Microsoft. There is also the option to allow MSSQL to send reports to Microsoft regarding the use of MSSQL. Checking or unchecking these boxes will have no impact at all on your usage of MSSQL. When you are satisfied with these options, click ‘Next’ to continue.
- f. **Ready to Install.**
You may now review the components to be installed with MSSQL Server 2005. If you wish to alter any options, use the ‘Back’ button to return to the option you wish to change. When you are satisfied with the installation configuration, click ‘Install’ to begin installation of MSSQL.

You have now installed MSSQL Server 2005. After completion you will see a window appear that will allow you to view the install log and also configure the surface area to be used by MSSQL. You may also scroll down in the text area to see links to MSSQL documentation, as well as code and database samples.

Click Help to view the help file or ‘Finish’ to complete the installation.