

# Installing Oracle

The Oracle Client software MUST be on the machine on which you wish to install IntraNet. This package contains the drivers required by the multiserver application in order to communicate with the database.

I recommend reading these instructions thoroughly before attempting to install Oracle. I also particularly recommend reading through each Step in the installation process, to ensure full understanding of the process.

## Installing Oracle

### **1. Insert your Oracle CD and begin installation.**

You now have 3 options, Select 'Install/Deinstall Products'

Here you will have the option to check whether any old instances of the Oracle software exist on your machine. Select 'Installed Products' to see a list of any Oracle applications currently residing on your machine.

If you wish to uninstall any components or applications, select 'Deinstall Products' and remove any Oracle products you wish.

You may also get information regarding the Oracle Installer package and help regarding the Oracle software.

### **2. File Locations**

Source: This should be the letter of your CD or DVD drive, followed by  
          \stage\products.jar

Destination: Choose where you would like Oracle to be installed

Click 'Next' when you are happy with these settings.

Oracle will now load Product Information

### **3. Available Products**

You will now be given 3 options regarding the Oracle installation:

Oracle Enterprise Edition: Installs both client and server side Oracle applications.

Oracle Client: Installs the client portion only.

Oracle Management Infrastructure: Installs all Oracle components.

You may install just the Client portion to successfully run IntraNet, however, the Enterprise or Management portion must be used in order to create a workable IntraNet database.

## 4. Installation Types

You will now be given 3 options regarding the Oracle installation:

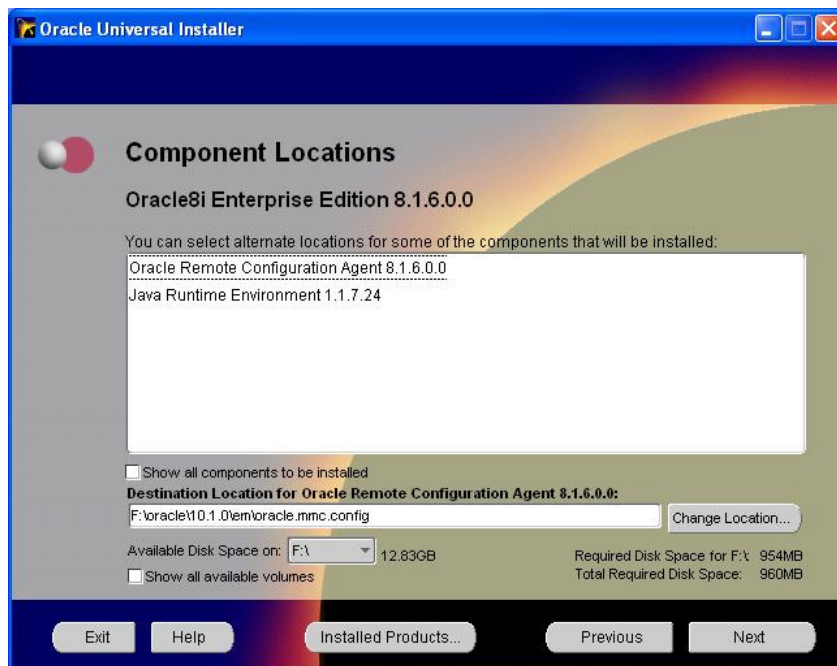
- Typical: Installs the majority of Oracle's components
- Minimal: Installs the minimum required to begin with Oracle.
- Custom: Allows you to organize your Oracle installation how best suits your needs.

When you have chosen your desired Oracle setup type, click 'Next', to continue.

## 5. Component Locations

You may choose to install certain components in a location that is separate from your Oracle location. You may decide to do this if you have limited drive space or if you wish separate components, such as the Java component, to be separate.

If you wish to select a new location, simply select the component you wish to install elsewhere, and select a new location in the 'Destination Location For...' textbox, located under the main list of components.



When you are satisfied with the component locations, select 'Next', to continue installation.

## 6. Authentication Methods

Oracle does not automatically install support for authentication. If you wish to install an authentication feature, select it from the list shown. It is not required that an option be chosen here to complete installation and will only be requested if you choose to install Oracle Advanced Security.

When you are satisfied, click 'Next' to continue.

## 7. Create Database

Oracle features a handy tool for creating databases called Oracle Database Configuration Assistant. If you wish to create a new database after installation using this tool, ensure the 'Yes' radio button is selected.

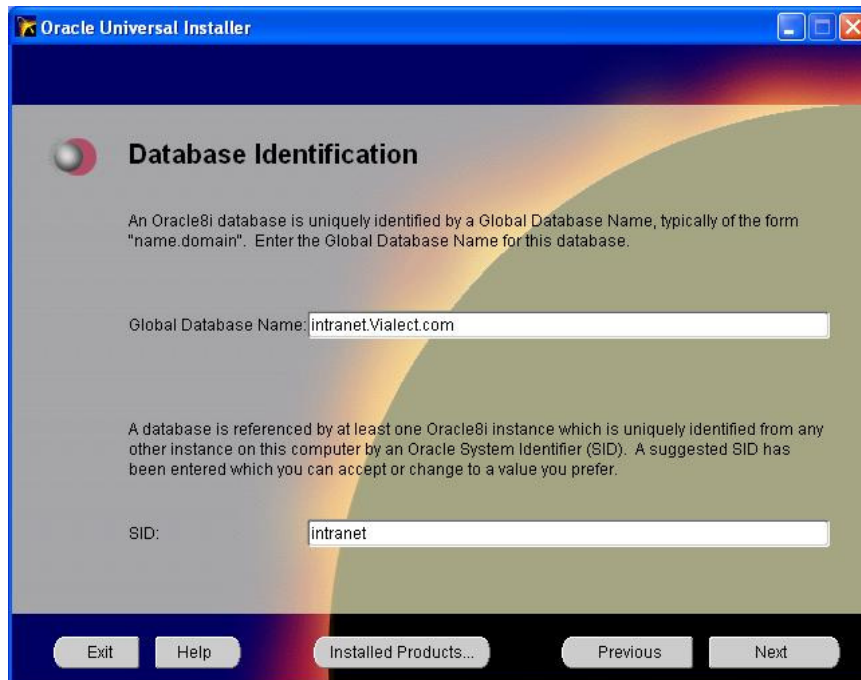
When you are satisfied, click 'Next' to continue.

## 8. Database Identification

You will now be given two options to enable Oracle and dependant applications to identify which database is going to be used.

Global Database Name is the name of the Global Database which usually incorporates the Oracle System Identifier or SID. The SID is very important when connecting to an Oracle database through a dependant application.

In the example shown below, my domain is vialect.com and SID is intranet. Oracle setup will automatically enter the SID in the lower textbox based on your input in the Global Database Name textbox. If you wish to change this name you may do so, however, ensure the SID is safe as you will need it.



## **9. Summary**

You now have the chance to review your chosen Oracle setup options, including components and languages. If you wish to change something in your installation setup, navigate back to the portion you wish to change using the 'Previous' button.

When you are satisfied with the setup options you have chosen, select 'Install' to begin Oracle installation.

## **10. Install**

Oracle will now be installed on your machine. If you wish to cancel the installation process at any time, click the 'Cancel' button, which is beneath the progress bar.

## **11. Net8 Configuration Assistant**

This is a tool that allows you to configure a network database connection and assign users. You may choose to allow Oracle to apply common settings for this utility, or you may choose to set this up yourself.

### **11.A. Directory Service Access**

If you have a directory service, you may configure it now.

### **11.B Configuration of Listener**

You may now name a Listener for your database and assign it a port.

### **11.C Naming Methods Configuration**

You may specify a net service here if you wish.

## **12. Primary Application**

Select the primary application type that will be dependant upon your Oracle database. If you are unsure you may choose 'Multipurpose'.

When you are satisfied, click 'Next' to continue.

## **13. Number Oracle Users**

Here you should make an estimation of the peak amount of users that will be accessing your Oracle database at the same time.

When you are satisfied, click 'Next' to continue.

## **14. Server Mode Selection**

Select the default mode for your database.

When you are satisfied, click 'Next' to continue.

## **15. Option Configuration**

If you wish to configure any of the options shown, select the checkbox adjacent to it and click 'Next'.

## **16. Review Changes**

You will now be shown your Global Database Name, SID, initialization filename, compatible parameters, control files. If you wish to alter any of these settings you may do so now.

You will also be given the option to alter the names and paths for tablespace information, tracefiles and SGA parameters, amongst others. If you wish to make any changes to these settings you may do so here.

When you have completed all relevant details, Oracle will ask if you wish to create the database now. Select 'Save information to a batch file', if you wish to perform this operation later.

Select 'Finish', to begin installation.