

INSTALLING NOODLE WITH MSSQL 2005

Preliminary Setup

It is imperative that ALL service packs and updates are applied to the MSSQL system before Noodle is installed.

You can ensure that the database system has the latest service packs by opening up the Management Studio for your MSSQL installation. This can be found in the Start menu in the folder that has been created for MSSQL, usually Microsoft SQL Server or MSSQL Server 2005, depending on your version.

It is also imperative that MSSQL is set to accept Windows AND SQL authentication. This will allow external programs, such as Noodle, database access. To do this you will need to alter the security configuration of the MSSQL instance.

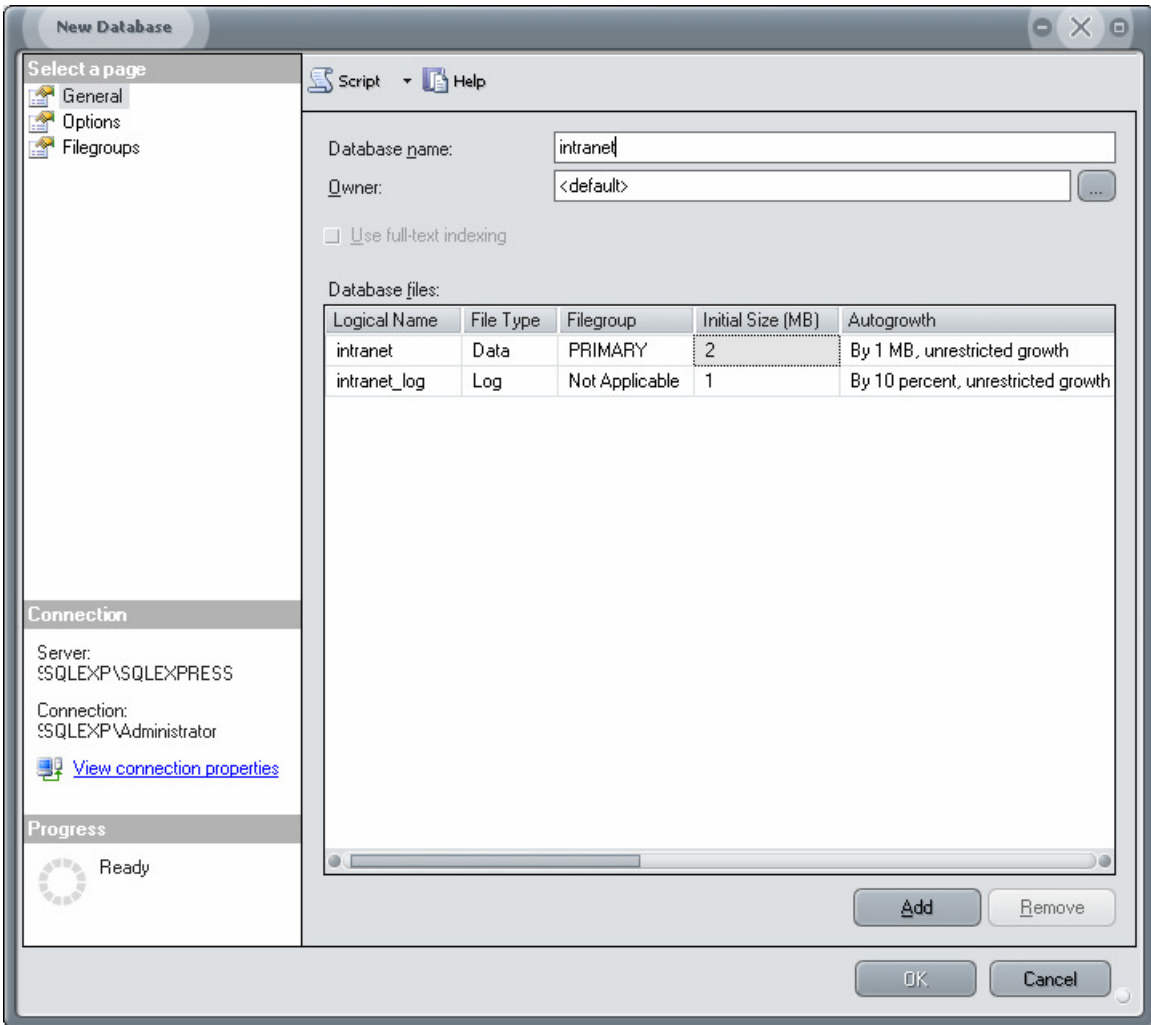
First, open up the Management Studio, right click on the Server object and select **Properties**. In the new window there is a tab called **Security**. In this tab, there is the option to select **Windows Only Authentication** and **Windows and MSSQL** authentication. Ensure **Windows and MSSQL Authentication** is selected.

Creating a Database and a User

In order for Noodle to be used with MSSQL, a database and a User will need to be created.

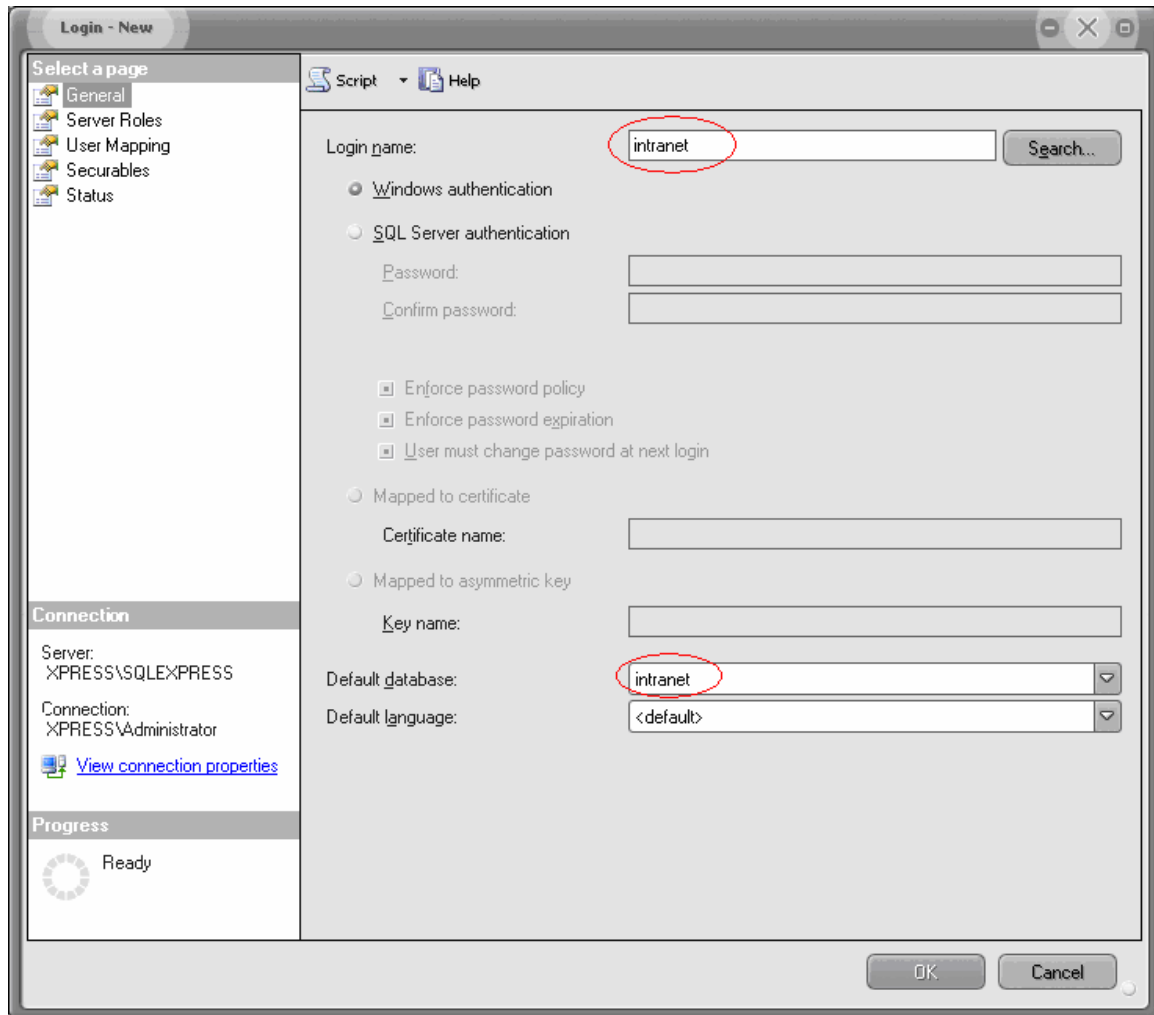
1. Creating a database

The first step is to create a database to store Noodle content. This is done from the Server Management Studio. From the Object Explorer right-click on 'Databases' and select 'New Database...'. In the new window, choose a name for the database, such as 'intranet' and save, as shown below:

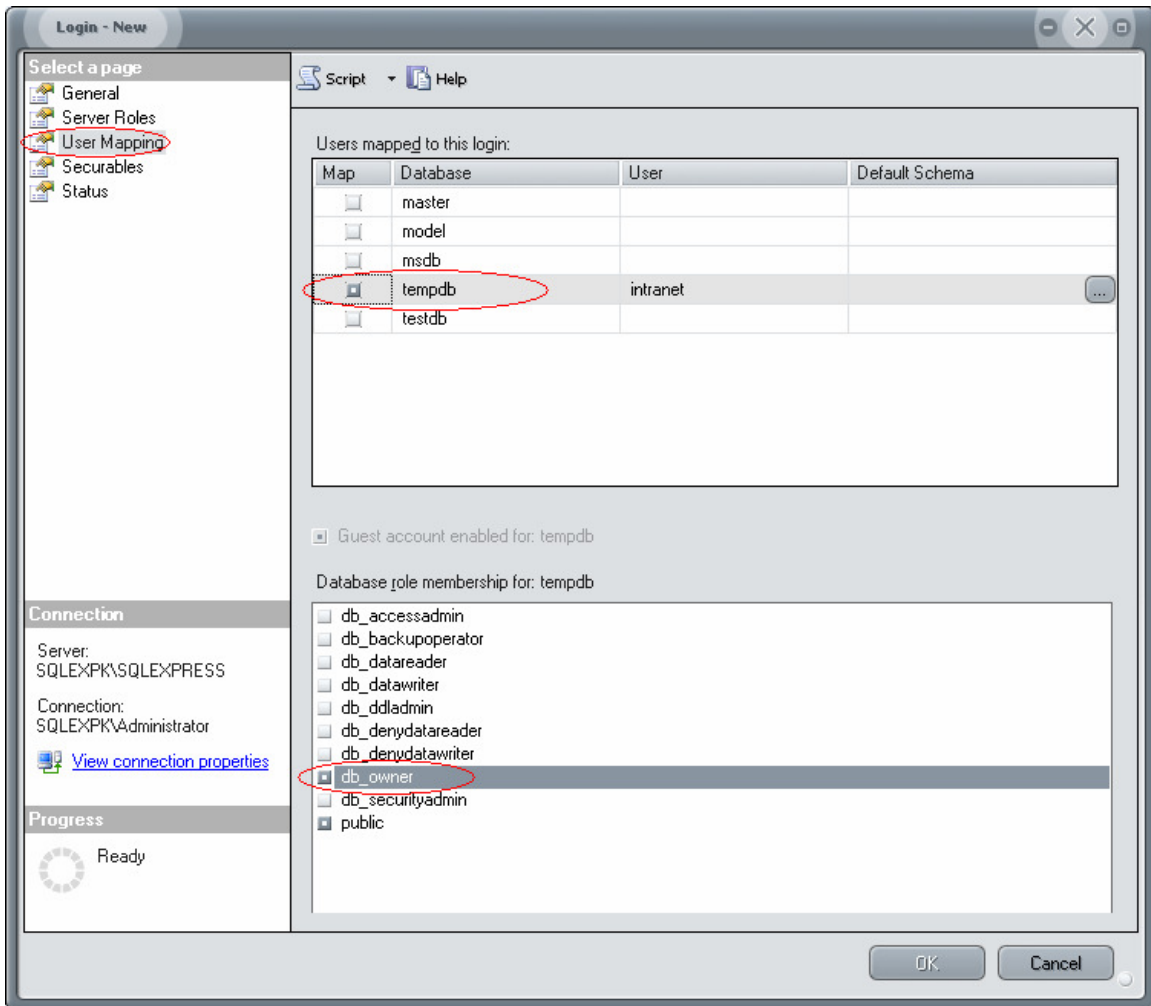


The next step in this process is to create a user with which Noodle will use to connect to the database. To begin, right-click on 'Security' in the Object Explorer and select 'New' and then 'Login...'.

In the new window enter a name for the login, such as 'intranet'. Now select the default database for this user to match the database that has been created for Noodle:



Once the login name and default database have been specified, the User's database role must be configured to allow the user to manipulate the database. To alter this user's role click on the 'User Mapping' link in the top left corner of the window. In the top frame of the new tab, select the database that was created in Step 1 by selecting the checkbox next to it. Once the database has been selected, move down to the list of settings in the lower box and check 'db_owner'. In this example, 'tempDB' is the name of the database:



The database is now ready for Noodle.

Installing Noodle

If at any time you are unhappy with options you have chosen during the installation process, you may select 'Back' to review and change any options you have chosen, or press 'Cancel' to escape the installation process completely.

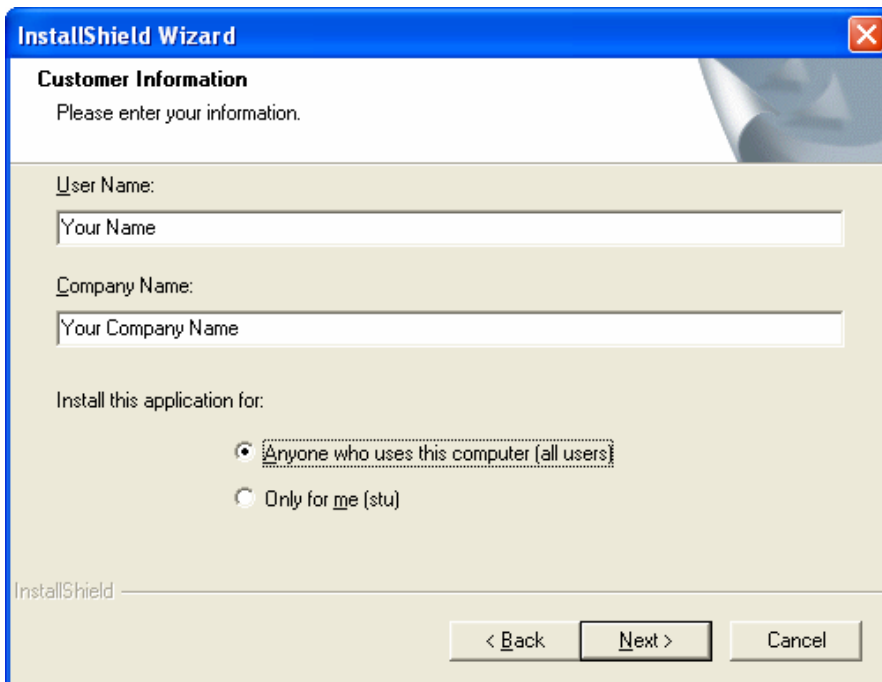
1. End User License Agreement

Read over the terms of the License Agreement and click 'Yes' when you are ready to continue.

2. Customer Information

In the text areas provided, enter your user name and company name. You may also specify if Noodle is to be available to all users. This is important if you are using a

shared computer. If you wish Noodle to be available to yourself only, click the lower radio button marked 'Only for Me (username)'. If you wish to make Noodle available to all users, you may leave it at the default as shown below:



The screenshot shows the 'InstallShield Wizard' dialog box with the 'Customer Information' tab selected. The dialog has a blue title bar with a close button. The main area is light beige and contains the following elements: a title 'Customer Information', a subtitle 'Please enter your information.', a 'User Name:' label with a text box containing 'Your Name', a 'Company Name:' label with a text box containing 'Your Company Name', and a section titled 'Install this application for:' with two radio buttons. The first radio button is selected and labeled 'Anyone who uses this computer (all users)'. The second radio button is labeled 'Only for me (stu)'. At the bottom, there are three buttons: '< Back', 'Next >', and 'Cancel'. The 'InstallShield' logo is visible in the bottom left corner.

When you are satisfied that this information is correct, click the 'Next' button to continue.

3. Choose Destination Location

Noodle is set by default to install to c:/Program Files/Noodle. If you wish to install Noodle at a different location, click 'Browse' and select a new location for Noodle. When you are satisfied with the location for Noodle, click 'Next' to continue.

4. Database Server

This is where you will choose what type of database will be used by Noodle. Select the 4th radio button, marked 'Microsoft SQL Server 2005', and click 'Next' to continue.

5. Database Information

This is where you will connect to the database that you should have already created using MSSQL Server 2005:

Server Name: Enter the name of the server that contains your MSSQL database.

SQL Login: Here you should enter the Login Name specified during the creation of your MSSQL database.
Password: Enter the password to the database, again specified during creation of the database.

InstallShield Wizard

Database Information
Enter Database Details

Please enter the server name, username, and password of the database you created for intraNET.

Server Name (i.e.: 192.168.1.69:1433)

SQL Login

Password

InstallShield

< Back Next > Cancel

6. Noodle Port Number

This should be set as default to port 80. If you wish to install Noodle on another port, please specify which port you wish to use in the area provided. Please ensure that no other web services are on the port on which you wish to run Noodle. Click 'Next' when you are ready to proceed.

7. Multiserver Admin Password

This option allows you to set the password for Noodle's diagnostic support tool and is required to continue the installation process. Click 'Next' when you have entered a password and are ready to continue installation.

8. Start Copying Files

This section allows you to review the options you have chosen for your Noodle installation. If you wish to change any of the settings shown, use 'Back' button to return

to the appropriate section. When you are satisfied with the parameters that will be used, click 'Next' to begin installation.

You will now be required to restart your machine to complete installation.

9. Database Pre-Load

Double clicking the 'Noodle Login' icon will take you to the 'Database Preload' screen. Here you will be prompted to enter the license key. Simply copy and paste the 2nd line of the 'license_key.txt' file into the indicated text area and click on 'Begin Database Preload' to begin the installation of the MSSQL database. You should then see a white screen with Noodle X.X.X Preload status, with X.X.X indicating the version of the software. After completion, you should see a number of completed tasks appear, along with a corresponding date and time. The username and password should be displayed at the top of the page, along with a link to Noodle.

You have now successfully installed Noodle with MSSQL.